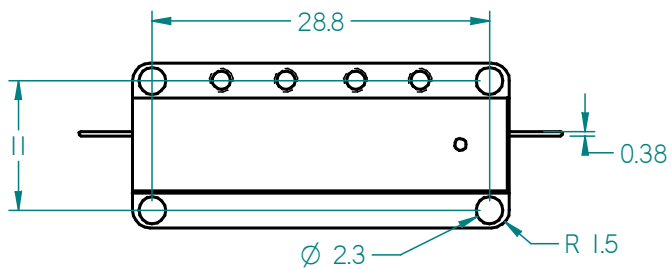
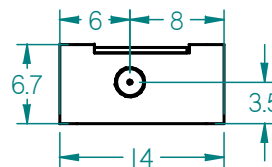
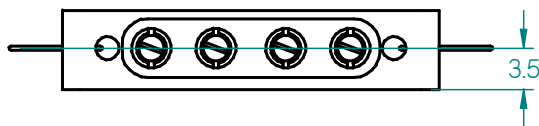
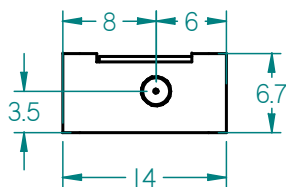
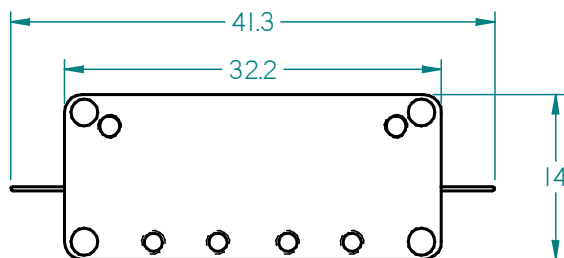
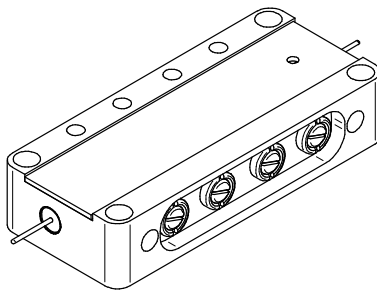


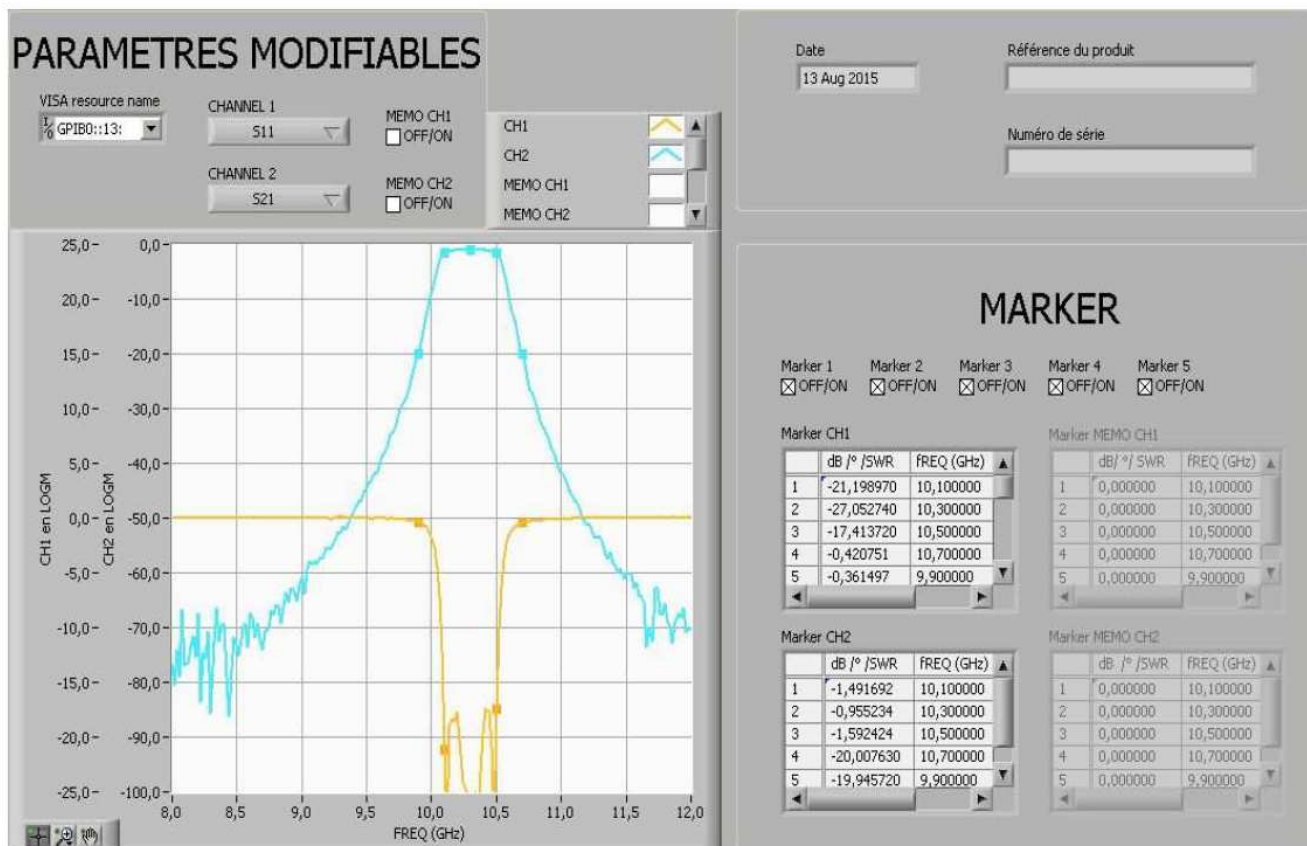
Surface mount Bande passe filter, Fo=10.3GHz, BW=0.4GHz

Caractéristiques électriques <i>Electrical specifications</i>	Conditions de mesures <i>Measurement conditions</i>	Spécifications <i>Specifications</i>			
		Min.	Typ.	Max.	Unités <i>Units</i>
Center frequency Fo	+20°C		10.3		GHz
Bandwidth	@ 1dBc		400		MHz
Insertion Loss	Fo, +20°C		0.8	1.5	dB
Rejection	Fo ± 0.4GHz		15		dB
	Fo ± 1GHz	30			
VSWR	Fo ± 0.2GHz		1.5:1	1.7:1	-
Impedance	Fo ± 0.2GHz		50		Ohms
Power handling	Fo ± 0.4GHz			10	w
Caractéristiques mécaniques <i>Mechanical features</i>					
Conditions de mesures <i>Measurement conditions</i>		Spécifications <i>Specifications</i>			
Longueur x largeur x Hauteur <i>Length x width x height</i>	L x W x H	32.2 x 14 x 6.7			mm
Connectique <i>Connectors</i>	Input	Solder Pin			
Connectique <i>Connectors</i>	Output	Solder Pin			-
Conditions environnementales <i>Environmental conditions</i>					
Conditions de mesures <i>Measurement conditions</i>		Spécifications / Specifications			Unités <i>Units</i>
Température de service <i>Operating temperature</i>	-	Min.	Typ.	Max.	°C
Température de stockage <i>Storage temperature</i>	-	-20		+55	°C
		-45		+85	°C

Ind.	Par	Le	Observation
0	C.Allamando	22/05/2015	Création
1	Allamando	13/06/2015	Add of simulated response
2	Allamando	27/08/2015	Final specification after prototype



Ind.	Par	Le	Observation
0	C.Allamando	22/05/2015	Création
1	Allamando	13/06/2015	Add of simulated response
2	Allamando	27/08/2015	Final specification after prototype



Ind.	Par	Le	Observation
0	C.Allamando	22/05/2015	Création
1	Allamando	13/06/2015	Add of simulated response
2	Allamando	27/08/2015	Final specification after prototype